



LAXMI INDUSTRIES



We provide high-quality solutions across diverse industries, including Earth Moving, Hydraulics, Material Handling, Generators, Machine Tools, and more. From Road Construction to Marine and Transportation, we deliver reliability and innovation tailored to your needs.



Scan for More informations



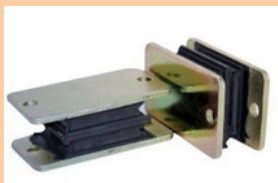
**Raise industry
Standards**

Join Laxmi Industries

www.laxmiindustriesindia.in

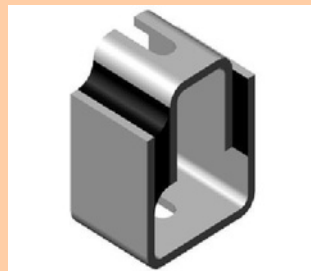
INDUSTRIES WE SERVE

- Earth Moving Industries
- Hydraulic Industries
- Material Handling Equipments
- Generator Set Industries
- Machine Tools Industries
- Pump Industries
- Plastic Industries
- Engine Mounting of various types
- Pharmaceuticals Industries
- Air Blower Plants
- Material Handling Equipments
- Road Construction Industries
- Commercial Marine
- Ground Transportation

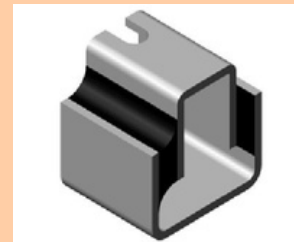




LR-1



LR-2

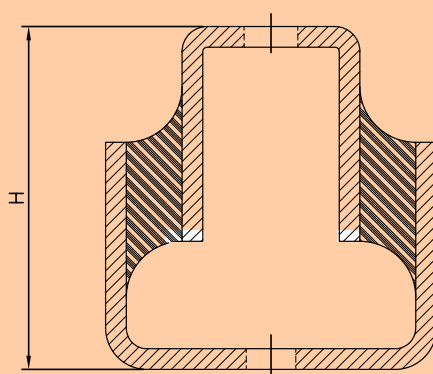
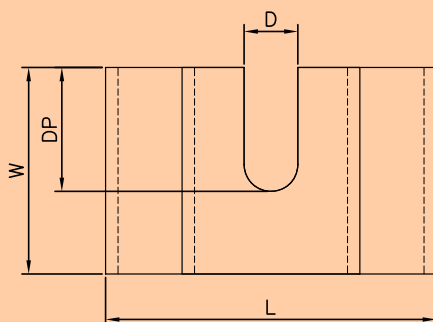
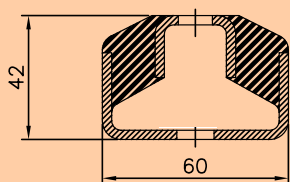
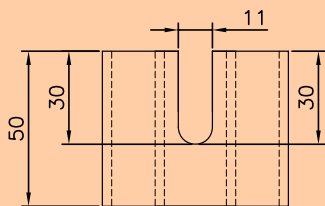


LR-3

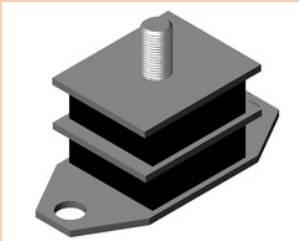
L.R.BOND DOUBLE U SHEAR MOUNT

L.R.BOND Double U Shear Mounting manufactured in Three different sizes such as LR-1 TO LR-3

L.R.BOND Double U Shear mounts are soft in nature & it has a spring action. Double U Shear mounts are capable of absorbing shock & vibrations in the vertical as well as lateral direction. A wider base provide stability in the installed equipment. The designs incorporates against metal to metal bonding. Double U Shear mountings are used for instruments, electronics apparatus protecting to equipment in packing cases, suspending light components, recorders, equipment's, electronics apparatus protecting to equipment in packing cases, suspending light components, recorders in vibrating equipment's, electrically controlled panels, suspending ducts pipe lines & high speed motors for hydraulic power packs, buffers etc.



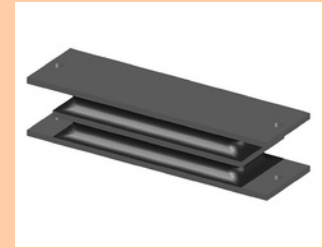
Type	DIMENSION (MM)U-SHEAR MOUNT LR-1 TO LR-3					
	H	L	W	D	DP	Load Capacity
LR-1	42	60	50	11	30	100 KG
LR-2	83	80	50	13	30	250 KG
LR-3	117	90	61	16	40	350 KG



LR-4



LR-5



LR-6

L.R. BOND SANDWICH MOUNT RECTANGULAR MOUNTING LR-4 To LR-6

Rectangular mounting also known as sandwich mounting and are widely used for engines in road vehicles & mobile construction plant. The mountings are best used in shear & compression but may be loaded directly in shear & compression. Rubber in mountings is bonded between two metal plates with holes at each end for fitting. Some designs incorporate steel interleaves for increased load capacity

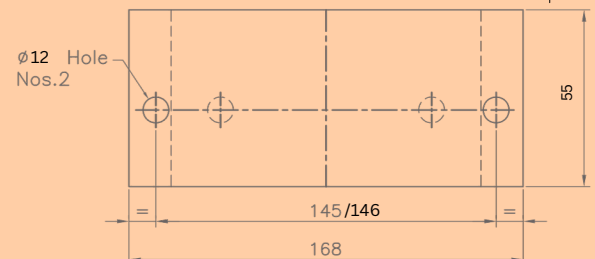
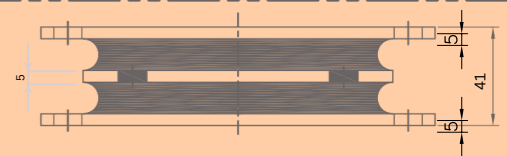
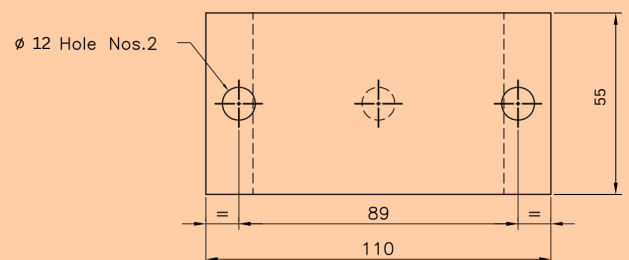
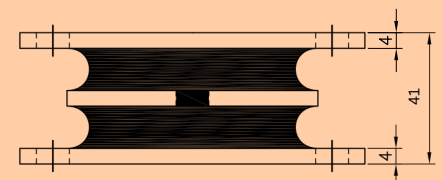
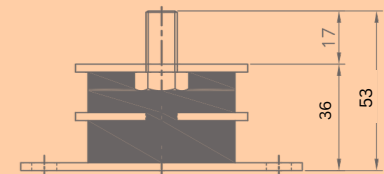
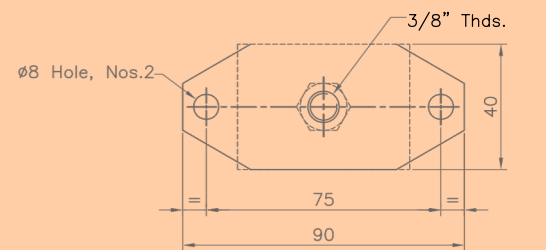
DESIGN FEATURES

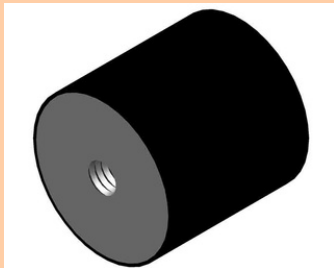
- Rectangular mounting should not be used in tension or exposed to contamination by mineral oil.
- Steel metals etch & primed on external surfaces.
- Mounded in first grade Natural Rubber.

TYPICAL APPLICATION

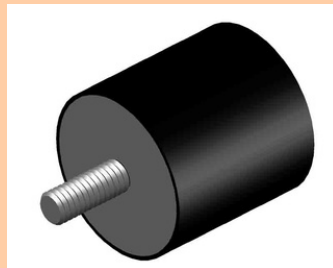
- Lift head gear
- Engine mountings for road vehicles
- Mobile construction plant
- Hoppers
- Heavy plants
- Conveyor System

PART NO	SIZE	LOAD CAPACITY
01	LR-4	350 Kg
02	LR-5	400 Kg
03	LR-6	1200 Kg

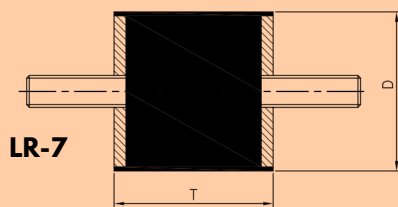
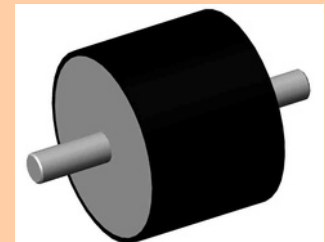




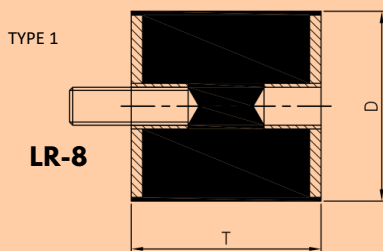
LR-8



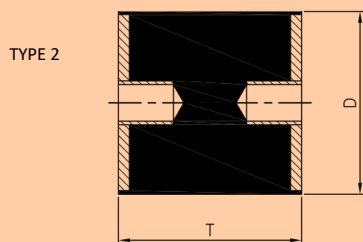
'O' MOUNT



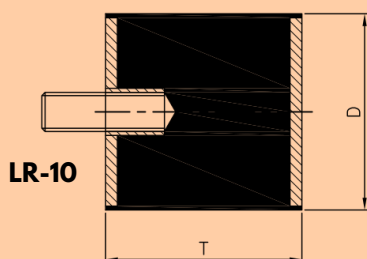
LR-7



LR-8



LR-9



LR-10

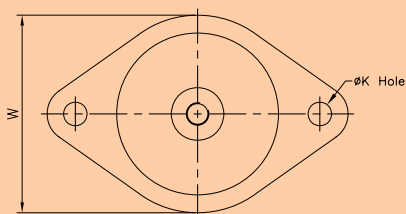
LR BOND "O" type mount are used provided resilient support for small medium size unit in Engineering application.

"O" mount are used for Compression & shear loading.

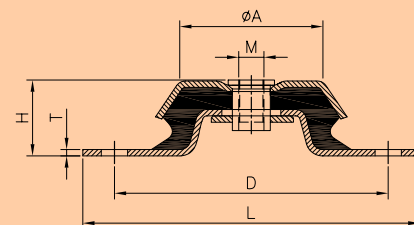
The numerous sizes, types and metal fitting available make possible a wide variety application and design option. There are file types of std mounts.

Any other size can be manufactured according Requirement.

OD
30 mm
40 mm
50 mm
60 mm
75 mm
80 mm
100 mm
150 mm



FOOT MOUNT



L.R. BOND FOOT MOUNTS are suitable for attenuation of high frequency of vibration and noise emitting machineries particularly Axial and Centrifugal fans. High resilience rubber with low dynamic to static stiffness ratio ensures maximum efficiency and good creep performance and long service life.

DESIGN FEATURES

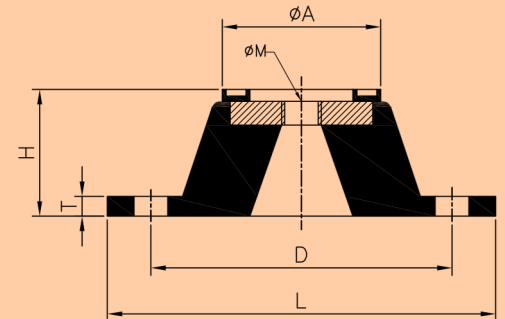
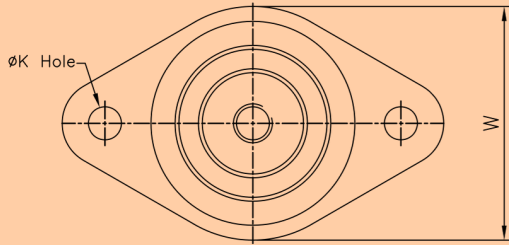
- Having non skid ribbed base
- Manufactured in four sizes each available in three rubber compounds identified by a colour Spot for different loading capacity
- Threaded Top
- Moulded in first grade Natural Rubber with integral mild steel base and M.S. threaded top
- Upper fixing bolts are of Standard size as per requirement
- Static deflection from 5 to 12mm

TYPICAL APPLICATION

- Refrigeration Plants
- Pumps
- Rotary and Multi Cylinder Compressors
- Isolation of Sensitive Equipment
- Test Ring and special Purpose Machine
- Air Handling units
- Axial and Centrifugal Fans
- Floating Floor

PART NO.	COLOUR CODE	LOAD CAPACITY
LR-11	BLACK	330 Kg
LR-12	BLACK	1000 Kg
LR-13	BLACK	1400 Kg

Type	DIMENSION (MM) FOOT MOUNT LR-10 TO LR-13							
	H	L	W	D	φA	φM	φK	T
LR-11	36	130	80	100	60	M10	10	3
LR-12	36	161	106	129	68	M12	14.3	3
LR-13	44.5	193.5	125.5	154	108	M16	14x27 Slot	3



COMBI MOUNT

L.R. BOND COMBI MOUNTS are suitable for attenuation of high frequency of vibration and noise emitting machineries particularly Axial and Centrifugal fans. High resilience rubber with low dynamic to static stiffness ratio ensures maximum efficiency and good creep performance and long service life.

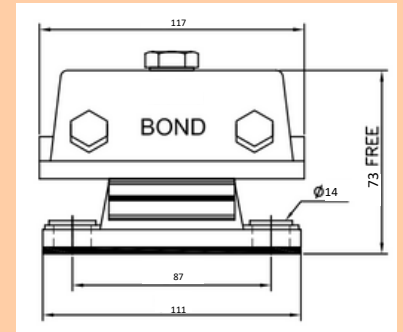
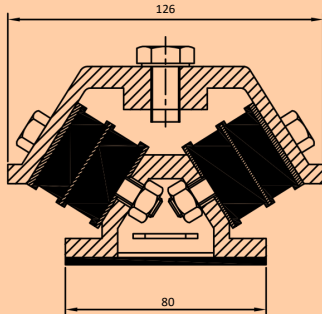
DESIGN FEATURES

- Having non skid ribbed base
- Manufactured in four sizes each available in three rubber compounds identified by a colour Spot for different loading capacity
- Threaded Top
- Moulded in first grade Natural Rubber with integral mild steel base and M.S. threaded top
- Upper fixing bolts are of Standard size as per requirement
- Static deflection from 5 to 12mm

TYPICAL APPLICATION

- Refrigeration Plants
- Pumps, Generators, Air Conditioning Unit
- Rotary and Multi Cylinder Compressors
- Isolation of Sensitive Equipment
- Test Ring and special Purpose Machine
- Air Handling units
- Axial and Centrifugal Fans
- Floating Floor

Type	DIMENSION (MM) COMBI MOUNT LR-14 TO LR-18							
	H	L	W	D	φA	φM	φK	T
LR-14	36	99	60	76	42	M10	8	6.5
LR-15	47	140	85	104	61	M12	14	6
LR-16	70	165	113	127	78	M12	14	6.5
LR-17	73	140	85	104	61	M12	14	6.5
LR-18	50	220	145	180	110	M24	15	10



CUSHYFOOTMOUNT

CUSHYFOOTMOUNTING LR-19 and LR-20

Cushyfoot Mounting are manufactured in three standard sizes known as LR-19, LR-20 "S". These mounting has very low natural frequencies, high deflection can be achieved by screwing two cushyfoot mounting together. Also protecting sensitive apparatus for external disturbances. It gives insulation against out of balance forces. These two pieces are housed in specially designed robust iron casting. The mountings are protected against oil, physical & mechanical damages. Cushyfoot mountings give insulation against transverse, vertical and longitudinal stiffness, vibration & reduce transmission of vibrations, structure borne noise & shock from a wide range of rotating and reciprocating machineries. LR BOND Cushyfoot Mounting consists of two sandwich pieces.

APPLICATION

No. need to bolt the machine. No need of grouting in rag bolt. Additionally, shifting of the location of the instrumentation with very less effects. The cushyfoot mounting can be supplied with bottom Friction Pads to avoid costly grouting/Anchoring to floor the equipment.

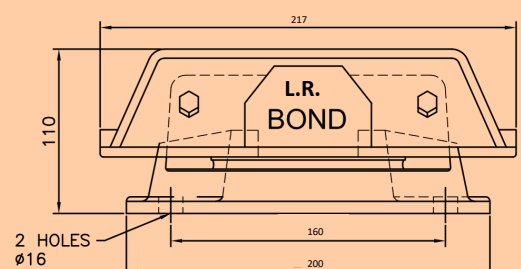
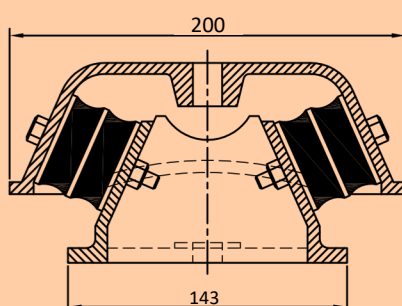
DESIGN FEATURES

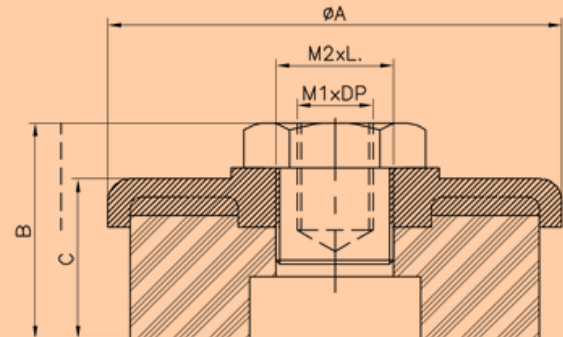
- Rubber sandwich elements are effectively protected by the top casting and its extended skirt.
- Static deflection up to 5.2mm with loads from 80 to 320 kg per mountings.
- Two different horizontal stiffness axis enable optimum system characteristics & vibration isolation to be achieved using careful orientation of the mounting.
- Standard C.I. Castings.
- Inclined rubber sandwich are first grade natural rubber to metal bonded elements

TYPICAL APPLICATION

- Heavy plants
- Conveyor System
- Mobile construction plant
- Lift head gear
- Hoppers
- Engine mountings for Road vehicles

PART NO.	LOAD CAPACITY	HARDNESS SHORE	DEFLECTION (mm)	TOP FIXING HOLE
				TAPPED
LR-19	320 Kg	80	5.2	M-16 & M-12
LR-20	1020 Kg	70	5.2	





LR-20 TO LR-24

L R.BONDMACHINE MOUNT LR-20 TO LR-24

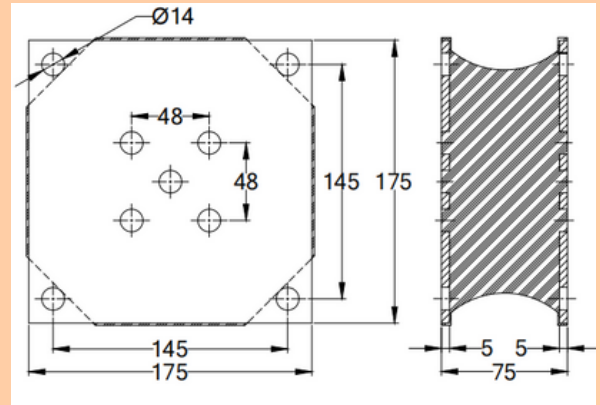
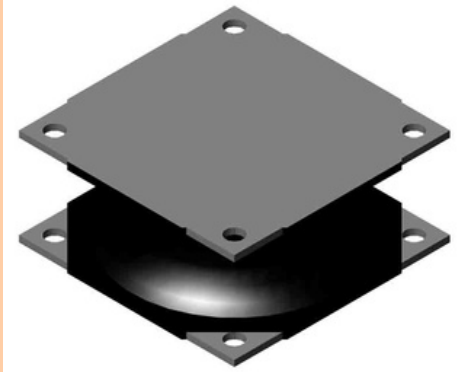
L.R.BOND Machine mounts are ready to use for Workshop Machineries. It will provide excellent mobility of machinery layout in workshop. It insulates high frequency vibration, sound & prevent wondering of machineries due to the large area of contact with the floor & keeps the machineries in position firmly. It safe guards the surrounding installed machines from shocks & impacts of installed machineries. These mounts are used in all places where you need safe machine installation without floor anchorage. No need of foundation Bolt, grouting, anchoring etc. A height adjustment & precise levelling features are provided. It safe guards the surrounding installed machines from shocks & impacts of installed machineries.

It is beneficial on working performance, working condition in the adjacent primises, such as offices & laboratory, are enormously improved. These mounts are used in all places where you need safe machine installation without floor anchorage.

APPLICATION

- Injection Moulding Machine
- Lathe & CNC lathes
- Precision Machine
- Presses
- Punching Machine
- Shaping Machine

MACHINE MOUNT LR-20 TO LR-24					
DIMENSIONS(mm)	LR-20	LR-21	LR-22	LR-23	LR-24
ϕA	80	120	160	145	200
B	48	502	60	57	73
C	37	40	48	45	58
M1 x D	M12 OR M16 x 16 DEEP	M16 x 20 DEEP	M16 x M20 x 26 DEEP	M16 x 22 DEEP	M1 20 x 30 DEEP
LOAD CAP	120-300 Kg	200 - 1000Kg	450 - 1200 Kg	500 - 1400 Kg	1500 - 2000 Kg



LR-25

Features

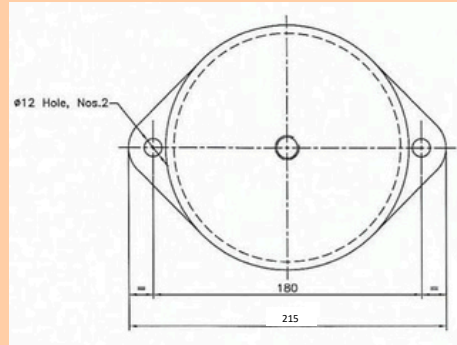
- OEM is available
- Forming: Rubber and steel plates are pressurized under high temperature vulcanization to make sure the composition is evenly stabilized for the best performance.
- Rubber material: Tear and wear resistant and anti-aging formula ensure the best performance during the machine operating.
- Customization

Application

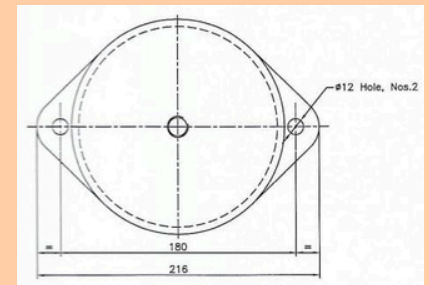
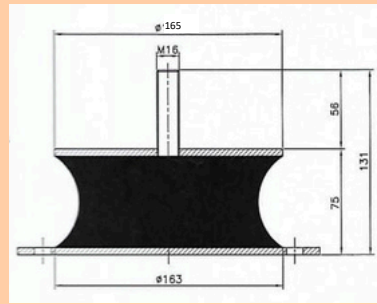
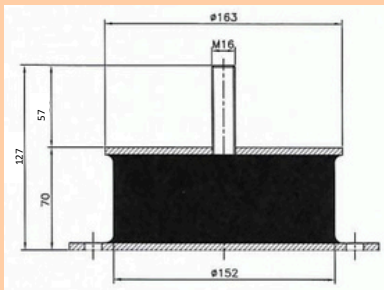
- Vibratory Pile Hammer
- Breaker
- Road Roller
- Compactor



LR-26



LR-27



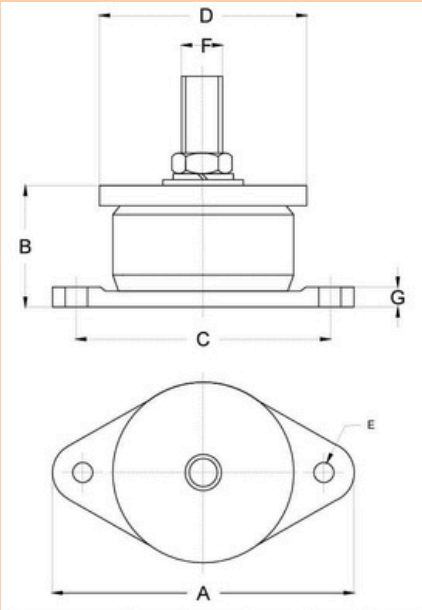
Features

- OEM is available
- Forming: Rubber and steel plates are pressurized under high temperature vulcanization to make sure the composition is evenly stabilized for the best performance.
- Rubber material: Tear and wear resistant and anti-aging formula ensure the best performance during the machine operating.
- Customization

Application

- Vibratory Pile Hammer
- Breaker
- Road Roller
- Compactor

PART NO.	LENGTH	WIDTH	UPPER PRAT LENGTH	DIAMETER
LR-26	215	70	162	162
LR-27	217	77	166	166

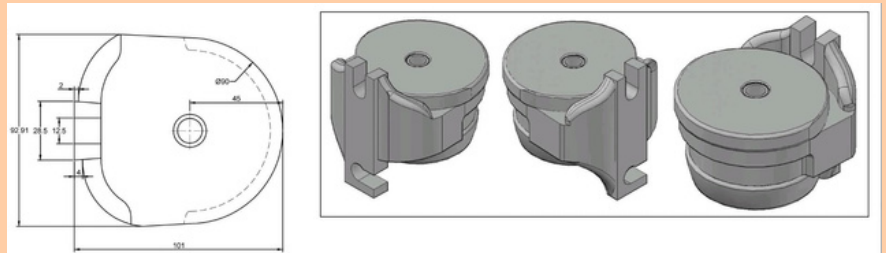


LR-28 TO LR-29

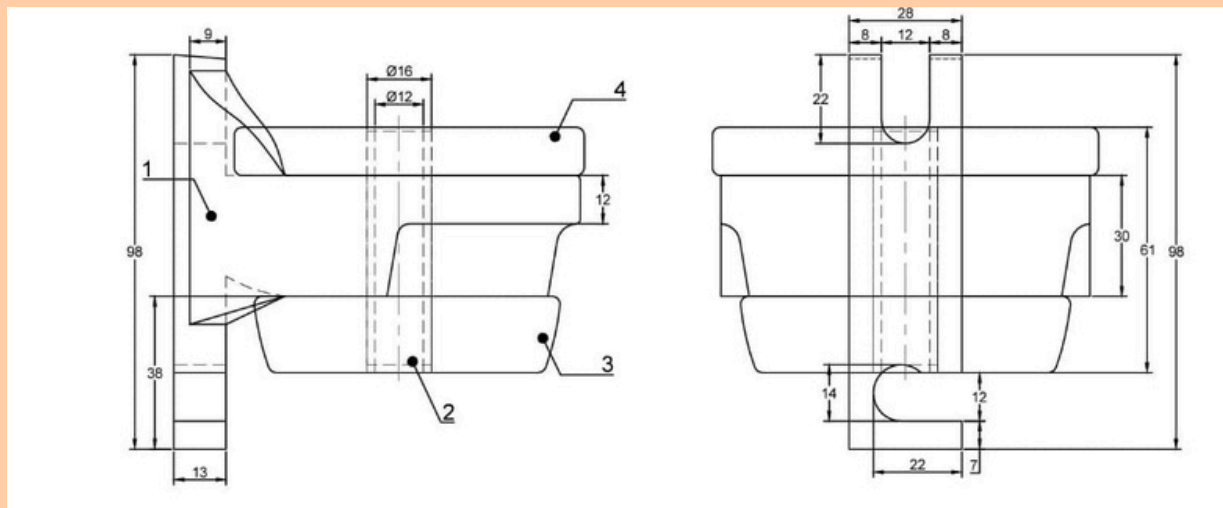
GENERATOR MOUNTING PAD

Laxmi Industries is one of the manufacturers listed products with extensive experience in supplying and manufacturing. Generator Mounting Pad for genset. Its structure is designed to suit any space limitation areas, and their internal bond controls are of special advantage. It prevents inherent noise/vibrations.

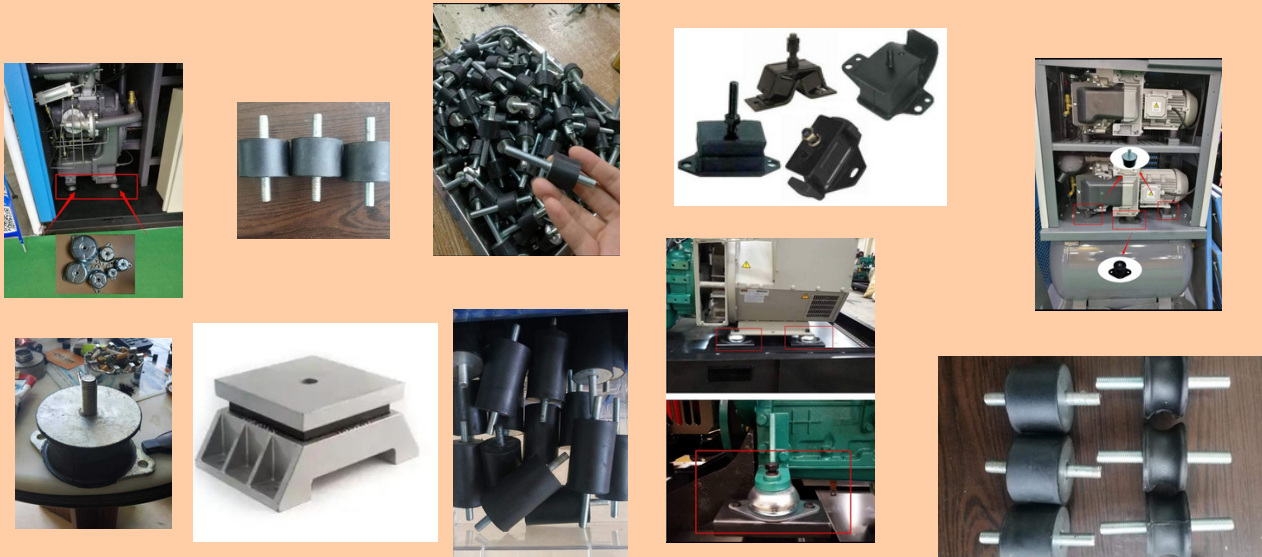
PART NO	LOAD CAPACITY	A	B	C	D	E	F	G
LR-28	50 -120	100	41	78	60	10	M8	8
LR-29	150-300	120	52	100	80	12	M12	9



LR-30



ITEM	DISCRIPTION	QTY.	MATERIAL
LR-30	BODY	1	CAST IRON
	PIN	1	EN-19
	PAD-1	1	RUBBER
	PAD-3	1	RUBBER



📍 L-173, ROAD NO:27, L TYPE GIDC, OPP TELEPHONE EXCHANGE, NR WATER TANK, ODHAV GIDC ESTATE, AHMEDABAD - 382415.

☎ +91 9924677787 , +91 9377010591

✉ tussargohil08@gmail.com



Scan for More informations

